

Rystix
Timbacare

Superior quality timber coatings


cabinsunlimited

For enquiries or sales call
01362 470075 or visit
www.cabinsunlimited.co.uk

For people who love wood



Rystix Timbercare... ...the story

Market research revealed that consumers were looking for superior quality timber coatings able to stand up to the forces of nature and wear and tear and expected long lasting value for money products. **Rystix Timbercare** recognised these needs and in 1992 commenced the development of the **Rystix Timbercare** range.

Rystix South Africa, a company that had been associated with the timber industry in South Africa since the 1950's listened to what the market wanted and developed a superior quality, simple to choose range to meet these needs incorporating the Exterior Sealer (Solvent-based), Exterior Armadek (Water-based), Interior Coating (Solvent-based) and Interior Armafloor (Water-based).

Rystix submitted its products to the Council for Scientific and Industrial Research (CSIR) to run accelerated weathering and wear testing against the best competitive products available on the market and the test results confirmed that **Rystix Timbercare** products out-performed all their competitors. Field testing in South Africa's National Parks also led to **Rystix Timbercare** products being specified on superior performance.

Rystix Timbercare is sold in selected retail outlets throughout South Africa, Southern Africa, the Indian Ocean Islands and since 2009 **Rystix Timbercare** products are available in the UK and Europe. Through ongoing laboratory research and field testing Rystix has developed a reputation for providing the highest quality products backed up by strong technical service and professional advice.

Each and every product in the **Rystix Timbercare** range has been designed and developed to ensure that it provides better quality and performance than any of the very best products available on the market.

Rystix Timbacare



EXTERIOR SEALER

Ultra long life, solvent based, deep penetrating, UV resistant, weatherproof sealer for use on all exterior timber directly or indirectly exposed to harsh weather and strong sunlight. Sealer is designed for treating hardwoods (including Oak, Iroko and Teak) and softwoods (all types of softwoods including Cedar) on applications such as cladding, wooden furniture, fascias, window frames and doors, sheds, log-cabins and decking.

EXTERIOR ARMADEK

Superior quality water based, ultra tough, long life, UV resistant, weatherproof coating for use on all exterior timber directly or indirectly exposed to harsh weather and strong sunlight. Armadek forms a tough wear resistant coating on the surface of the timber and is designed to protect wooden decks, but can be used on any exterior timber. Armadek is quick drying, low in odour and easy to apply.



INTERIOR ARMAFLOOR

Interior Armafloor is a water based acrylic coating for wooden floors and internal wooden objects subject to high wear or high traffic volumes. Technically advanced, Armafloor is a self cross linking product with a hardening catalyst pre-built into the product. Armafloor is a low odour, ultra quick drying product providing long lasting protection against abrasion, scratching, staining and hot objects and is not marked by water or alcohol spills.



INTERIOR COATING

High quality polyurethane coating recommended for use on all interior woodwork where a tough clear coating is required. Interior Coating provides a high quality finish with long lasting protection against scratching, staining and hot objects and is not marked by water or alcohol spills. Interior Coating is solvent based, low in odour and has a relatively fast drying time. Special grain enhancing technology ensures a superb clear coating finish.

Which product is right for me?

EXTERIOR SEALER (Solvent based)

Key advantages: Ultra long life, deep penetrating, UV resistant sealer

Best For: Any hardwood or softwood external timber where product lifespan is determined by the weather rather than physical abrasion.

EXTERIOR ARMADEK (Water based)

Key advantages: Quick drying, tough wearing, UV resistant coating

Best For: Ideally suited where maintenance turnaround times are a critical factor and where product lifespan is determined by physical abrasion rather than the weather.

INTERIOR ARMAFLOOR (Water based)

Key advantages: Ultra quick drying, tough coating

Best For: Interior wooden floors subject to high wear and traffic volumes but can be used on any internal wooden objects such as bar counters or furniture.

INTERIOR COATING (Solvent based)

Key advantages: High quality clear finish

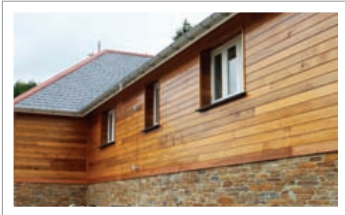
Best For: Internal wooden furniture (not recommended for floors where high abrasion resistance is required).



EXTERIOR SEALER

Ultra long life, deep
penetrating, UV resistant,
weatherproof sealer

Exterior Sealer (Solvent Based)



Rystix Exterior Sealer is a unique hybrid between a penetrating oil and a film building product providing ultra long protection to all exterior timbers. The sealer obtains a deep penetration into the timber which is the key into the timber and the foundation for the film building process. This unique ability enables long term treatment solutions for stable homogenous hardwoods including Teak and Ipé as well as all softwoods including Western Red Cedar used extensively in the cladding industry. Rystix Exterior Sealer's ability to provide an effective coating to these timbers with high natural oil content will only serve to emphasize its superior performance ability on other hard and softwood timbers.

Superior quality Exterior Sealer looks like a varnish but does not behave like a varnish. A long oil alkyd resin base provides the product with tremendous flexibility to expand and contract and the sealer will therefore not peel or flake. It has an exceptionally high degree of UV resistance and special agents to prevent dry rot, insect and fungal attack. Exterior Sealer has proven capability and durability in all climatic environments.

Where product lifespan is likely to be determined by weathering rather than physical abrasion then the choice should be to use Exterior Sealer. This product can be used to treat all timber types and application purposes include cladding, log-cabins, general outdoor wooden furniture, windows and doors, fencing, fascias, sheds and decking. In a decking situation which is subject to high traffic volumes the special hardening additive should be used in conjunction with the sealer to provide greater wear and abrasion resistance (see Armadek for alternative).

The refurbishment process for Timbacare is different to that for varnishes on the market, in that these other products need to be removed from the surface of the timber (scraping or sanding) before re-coating can take place. Where Timbacare has been previously used, it is only necessary to clean the surface with detergent water or mineral turpentine and allow it to dry before applying a fresh coating. The process of recoating over time simply replaces the layers that have been lost to weathering.

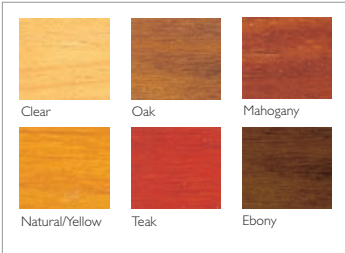
Exterior Sealer is available in a clear and 5 standard colour variants but the clear variant can be tinted to any colour by the addition of universal pigments.

Key Advantages
Ultra long life
Deep penetrating
UV resistant
Weatherproof sealer

Other Key factors
Micro-porous: allows the timber to breathe
Translucent: allows the natural grain of the timber to show

Best for:
Any outdoor timber – including timbers with high natural oil content such as Cedar, Teak and Ipé

Coverage and Drying:
10m² per litre coverage
8 hours drying time between coats (drying time may vary according to the porosity of the substrate, season, temperature and exposure conditions)

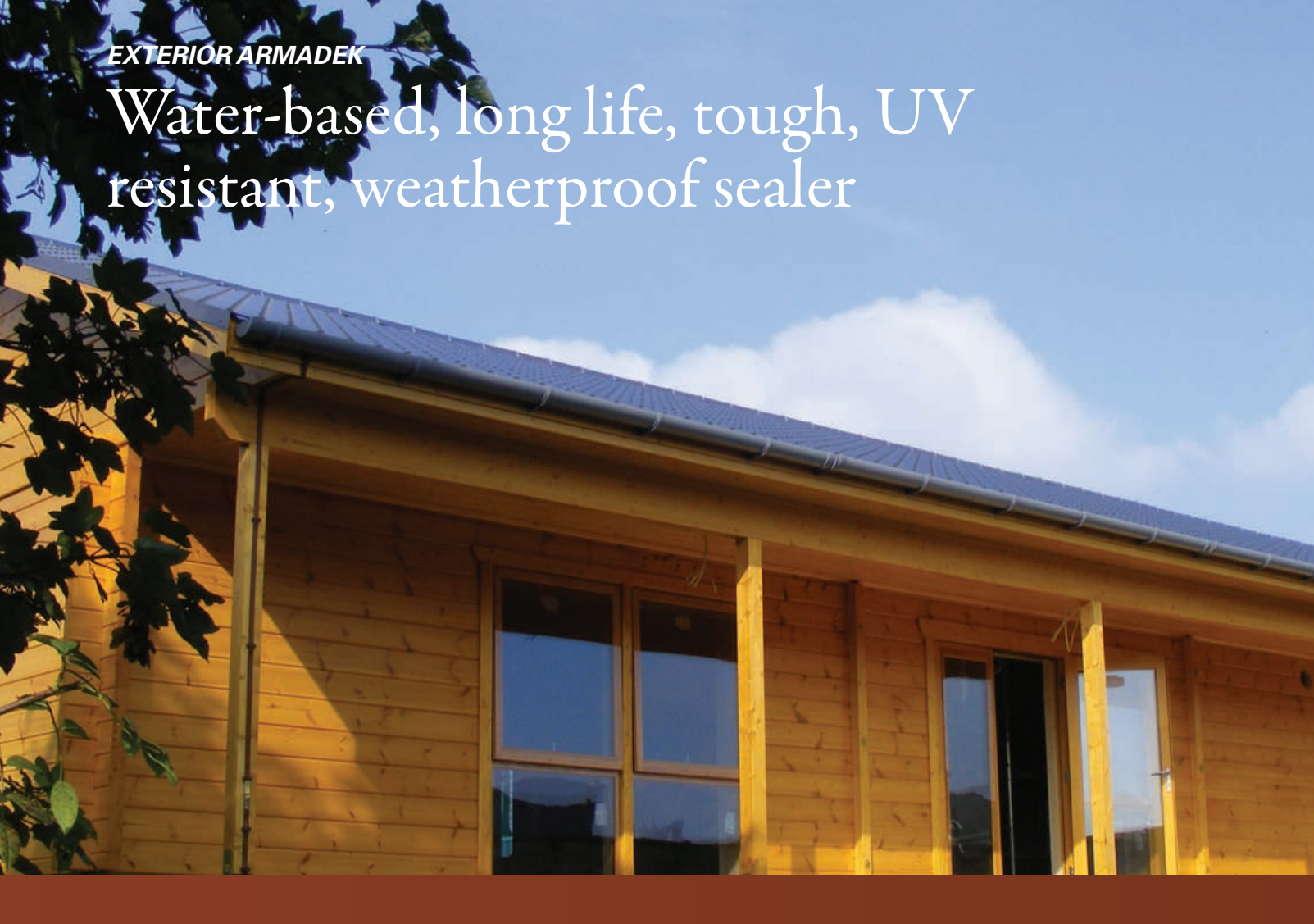


To find out more call **01362 470075** or visit **www.cabinsunlimited.co.uk**

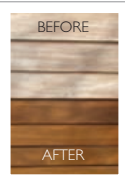


EXTERIOR ARMADEK

Water-based, long life, tough, UV
resistant, weatherproof sealer



Exterior Armadek (Water Based)



Rystix Exterior Armadek is a superior quality water based protective coating specially designed to protect and beautify outdoor wooden decks and can also be used on outdoor furniture and cabins. Armadek is an acrylic based product that forms a tough wear resistant coating on the surface of the timber. UV filters, inhibitors and pigmentation combine to provide an exceptionally high degree of UV resistance and special agents prevent dry rot, insect and fungal attack. Armadek is an extremely quick drying and low odour product.

Where product lifespan is likely to be determined by physical abrasion rather than weathering then the choice should be to use Exterior Armadek. Armadek can be used to coat external timbers (beware of applying a water based product to timber with high natural oil content such as Teak, Ipé and Cedar) and application purposes include cladding, log-cabins, general outdoor wooden furniture, windows and doors, fencing, fascias, sheds and decking (see Exterior Sealer for an alternative). Armadek can be applied by spray, pad applicator roller or brush.

The refurbishment process for Timbacare is different to that for varnishes on the market, in that these other products need to be removed from the surface of the timber (scraping or sanding) before re-coating can take place. Where Timbacare has been previously used, it is only necessary to clean the surface with detergent water and allow it to dry before applying a fresh coating. The process of re-coating over time simply replaces the layers that have been lost to weathering.

In situations where maintenance turnaround times are critical Armadek is an ideal product because of its rapid drying time. Benches, tables and decks can be re-coated and then put back into use within a very short time span.

Exterior Armadek is available in a clear and 5 standard colour variants but the clear variant can be tinted to any colour by the addition of universal pigments.

Key Advantages

- Water based
- Long life
- Tough wearing
- UV resistant
- Weatherproof coating

Other Key factors

- Micro-porous: allows the timber to breathe*
- Translucent: allows the natural grain of the timber to show*
- Fast Drying*

Best for:

Any outdoor timber – avoid coating timbers with high natural oil content such as Cedar, Teak and Ipé

Coverage and Drying:

*10 - 12m² per litre coverage
2 hours drying time between coats
(drying time may vary according to the porosity of the substrate, season, temperature and exposure conditions)*



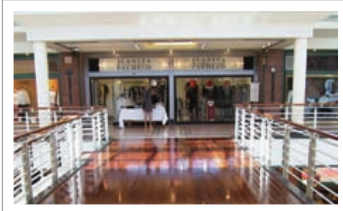
To find out more call **01362 470075** or visit **www.cabinsunlimited.co.uk**

INTERIOR ARMAFLOOR

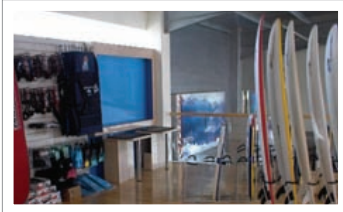
High quality, rapid drying, water based, ultra tough, abrasion resistant clear floor coating



Interior Armafloor (Water Based)



Rystix Interior Armafloor is a water based polymerised acrylic emulsion coating for wooden floors and other internal wooden objects subject to high wear or high traffic volumes. Armafloor is a technically advanced self cross linking product with the hardening catalyst built into a one pack system and provides excellent wear and scratch resistance as well as an ultra tough long lasting coating.



Armafloor is an ultra quick drying, low odour product. Armafloor's quick drying characteristics even at low temperatures will facilitate substantial time/cost savings. The product is self levelling and not subject to line off (marking due to edge line drying).

Armafloor is designed to be spread in a thin film on the surface of the timber and has a superb smooth application with a very good coverage rate. Best application methods are with lambswool applicators, pad applicators or by brush.

The refurbishment process for Timbacare is different to that for most other varnishes on the market, in that these other products need to be removed from the surface of the timber

(scraping or sanding) before re-coating can take place. Where Timbacare has been previously used, it is only necessary to lightly sand and clean the surface with detergent water and allow it to dry before applying a fresh coating.

Armafloor is available as a clear finish in either Satin/Matt or Gloss but can be tinted to any colour by the addition of universal tints, however, Rystix advise the use of floor stains before over-coating with Clear ARMAFLOOR to ensure a homogenous colour finish both now and in the future when it comes to maintenance. The clear finish enhances the natural beauty of all wood surfaces.

The sheen characteristics of the 'Matt' variant sits midway on a scale between high gloss and a flat dull matt and is thus effectively a satin finish.



INTERIOR ARMAFLOOR is a technically advanced self cross linking product with the hardening catalyst built into a one pack system.

Key Advantages
Water based
Ultra fast drying
Hard wearing
Abrasion resistant

Other Key factors
Non yellowing and will not discolour timber
Self levelling
Not subject to marking due to edge line drying

Best for:
Any indoor timber – interior wooden floors subject to high wear and traffic volumes but can be used on any internal wooden objects such as bar counters or furniture

Coverage and Drying:
10 - 15m² per litre coverage
Touch dry – 30 minutes
4 hours drying time between coats (drying time may vary according to the porosity of the substrate, season and temperature)



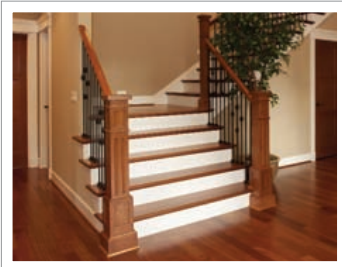
To find out more call **01362 470075** or visit **www.cabinsunlimited.co.uk**

INTERIOR COATING

General purpose, high quality,
tough, fast drying, polyurethane
coating



Interior Coating (Solvent Based)



Rystix Interior Coating is a high quality interior polyurethane coating designed to beautify and protect internal wooden furniture and objects. This clear coating gives long lasting protection against scratching, staining and hot objects and is also not marked by water or alcohol spills. Interior Coating is a fast drying solvent based product which is low in odour.

The refurbishment process for Timbacare is different to that for most other varnishes on the market, in that these other products need to be removed from the surface of the timber (scraping or sanding) before re-coating can take place. Where Timbacare has been previously used, it is only necessary to lightly sand and clean the surface with mineral turpentine and allow it to dry before applying a fresh coating.



Interior Coating is available in a clear gloss and matt sheen but can be tinted to any colour by the addition of universal tints. The clear finish enhances the natural beauty of all wood surfaces.

The sheen characteristics of the 'Matt' variant sits midway on a scale between high gloss and a flat dull matt and is thus effectively a satin finish. The interior coating has special grain enhancing technology which ensures that a superb clear coating finish is achieved. The coating is non-yellowing and will not discolour timber.



INTERIOR COATING
Special grain enhancing technology displays the true beauty of the timber

Rystix Timbacare

Key Advantages

High quality
Grain enhancing
Fast drying
Tough
Polyurethane coating

Other Key factors

Non yellowing and will not discolour timber

Best for:

Any indoor timber – internal wooden furniture (not recommended for floors where high abrasion resistance is required, but can be used on low traffic wooden flooring e.g. bedroom, bathroom, etc.)

Coverage and Drying:

8 - 10m² per litre coverage
2 - 4 hours drying time between coats (drying time may vary according to the porosity of the substrate, season and temperature)



To find out more call **01362 470075** or visit **www.cabinsunlimited.co.uk**

Product Selector Chart for Exterior application



EXTERIOR SEALER
(Solvent based)

EXTERIOR ARMADEK
(Water based)

Cladding	✓	✓
Doors / Frames	✓	✓
Windows / Frames	✓	✓
Fascias / Barge Boards / Eaves	✓	✓
Log Cabins / Garden Sheds	✓	✓
Garden Furniture	✓	✓
Fences / Trellises	✓	✓
Decks	✓	✓
Stairs	✓	✓
Hand Rails	✓	✓

Best for Timber types:

General Softwood types	✓	✓
General Hardwood types	✓	✓
Cedar	✓	
Teak	✓	
Balau		✓
Garapa		✓
Ipe	✓	
Oak	✓	



Product Selector Chart for Interior application



INTERIOR ARMAFLOOR
(Water based)

INTERIOR COATING
(Solvent based)

✓	✓	Skirting
✓	✓	Doors / Frames
✓	✓	Windows / Frames
✓	✓	Kitchen Units
✓	✓	Indoor Furniture
✓	✓	Floors
✓	✓	Bar Counters
✓	✓	Solid Timber Countertops
✓	✓	Stairs
✓	✓	Hand Rails / Bannisters

Best for Timber types:

✓	✓	General Softwood types
✓	✓	General Hardwood types

